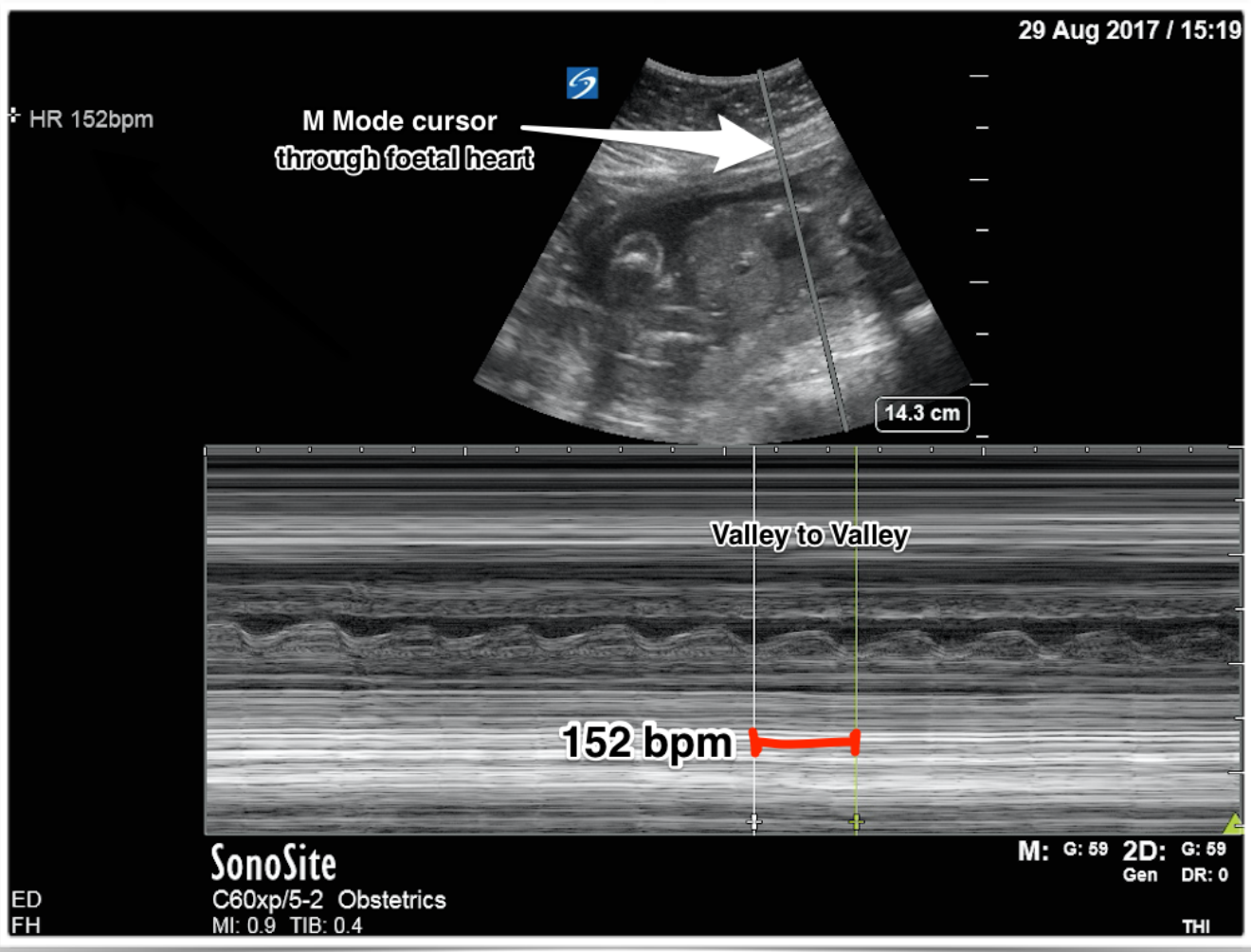


SONIC BOOM

Right Patient | Right Study | Right Probe

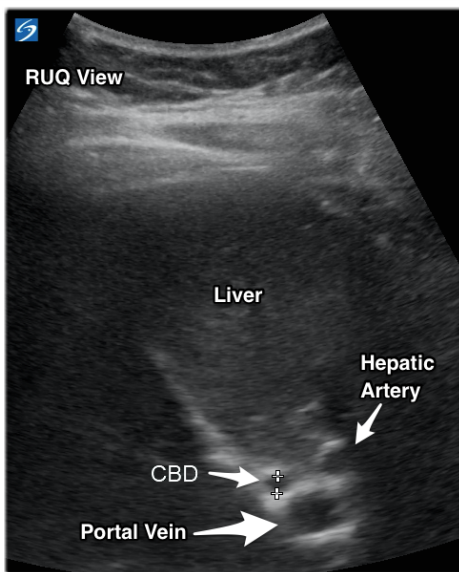


Ultrasound of the Week

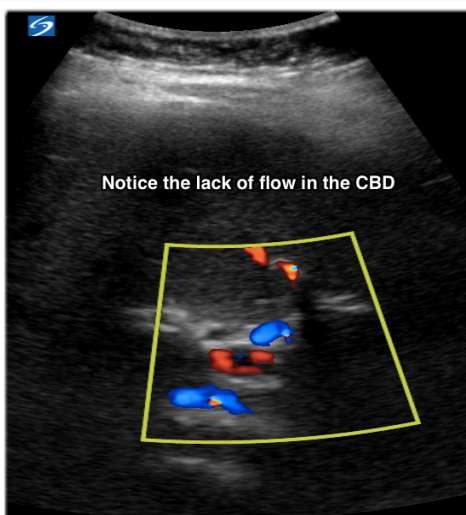
For ED patients in early pregnancy, we have an additional vital sign - the Foetal Heart Rate. Doppler/Pulsed US should not be used for this purpose as it can damage the foetus by elevating it's temperature. Motion mode (M-mode) is a suitable alternative. Place the M-mode cursor through the beating foetal heart. This gives you a visual representation of movement through the single beam line. You can then see the sine-wave of motion showing heart movement. Simply place the measurement callipers at the 2 adjacent valleys or peaks. The machine does the rest!!

Mickey Mouse

The sonographic Mickey Mouse Sign on a Biliary scan is the configuration of the portal triad in short axis, with the portal vein comprising Mickey's "head" and the common bile duct and hepatic artery as his right and left "ears", respectively .



You can be even more cute and put on the 'Colour' mode which should demonstrate lack of significant flow in the CBD compared to the hepatic artery and portal vein which both 'light-



Gall Bladder on US

Notice that in a patient not adequately fasted, how the Gall Bladder being contracted causes an appearance of a thick wall and this would make it hard to visualise any stones or sludge. The second image shows the GB in a patient NBM for several hours - this makes it easy to see sludge and thickened wall.

